



Carclaze Community Primary School

Transition Information for Parents

Care, Communicate, Persevere and Sparkle

Early Years Foundation Stage (EYFS)

**Prime
Areas**



**Specific
Areas**

The Prime Areas of Learning are the fundamental skills that support all other learning. It is important that children have strong skills in these areas to help support them fully within the Specific Areas of Learning.



Prime Areas

Prime Areas	
Communication and Language	Listening, Attention and Understanding
	Speaking
Personal, Social and Emotional Development	Self-regulation
	Managing Self
	Building Relationships
Physical Development	Gross Motor Skills
	Fine Motor Skills



Communication and Language



Personal, Social and Emotional Development



Physical Development

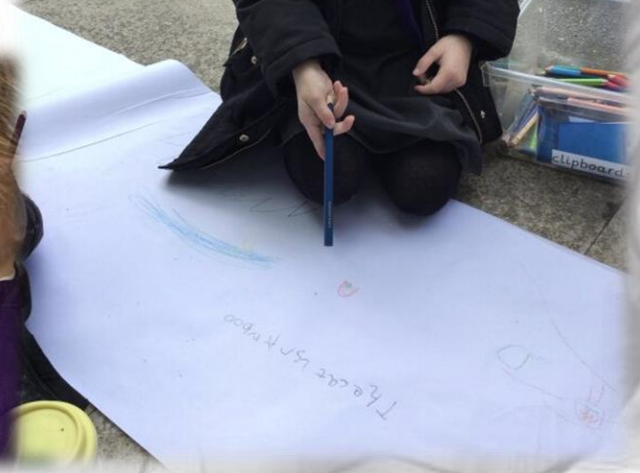
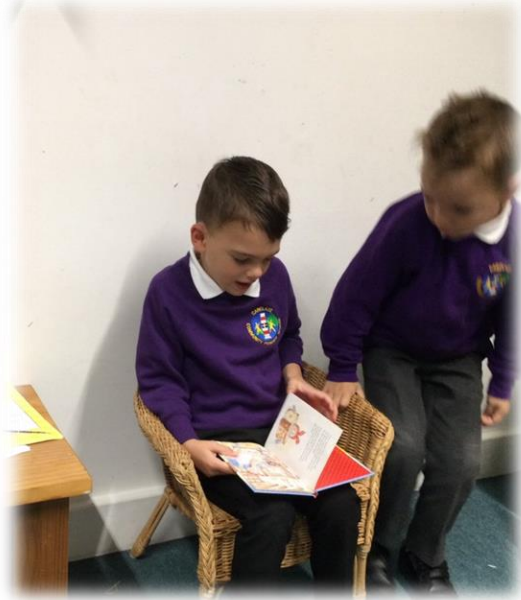


Specific Areas

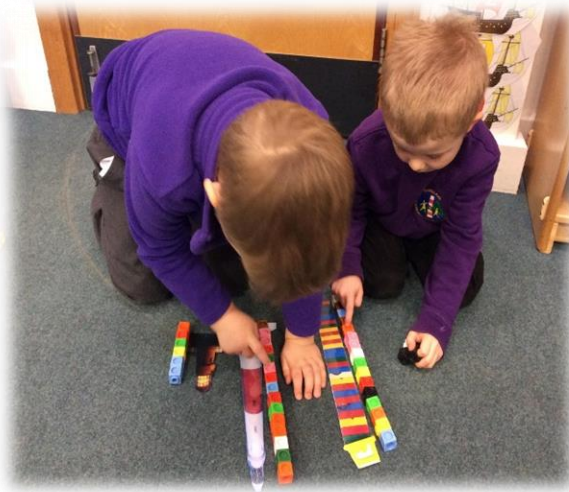
Specific Areas	
Literacy	Comprehension
	Word Reading
	Writing
Mathematics	Number
	Numerical Patterns
Understanding the World	Past and Present
	People, Culture and Communities
	The Natural World
Expressive Arts and Design	Creating with Materials
	Being Imaginative and Expressive



Literacy



Maths



Understanding the World



Expressive Arts and Design



Characteristics of Learning

Playing & Exploring (**Engagement**)

- Finding out and exploring
- Playing with what they know
- Being willing to have a go

Active Learning (**Motivation**)

- Being involved & concentrating
- Being determined to keep trying
- Enjoying achieving

Creating & Thinking Critically (**Thinking**)

- Having their own ideas
- Making links
- Choosing how to do things



Baseline

The Reception Baseline Assessment is a statutory assessment of early mathematics and literacy, communication and language for children starting school.

This assessment is carried out on a 1:1 basis by a familiar adult to the child and is administered within the first six weeks of the academic year.

The assessment has two components, each consisting of practical tasks using physical resources.



Timetable of the Day

A Typical Foundation Stage Day

Drop off

Morning Welcome and Registration

Oracy Activity/Sparkling Sentences

NCETM Mathematics

Read Write Inc (Phonics)

Drawing Club

Plan, Do, Review

Story Time

Lunch

Afternoon Registration

Happy Hands

White Rose Mathematics

Small Group Adult Directed Activities

Plan, Do, Review

Story Time/Reflection

Home Time



Lunch and Snack

All key stage 1 children receive a hot free school dinner daily, these need ordering online the weekend before. They have 3 choices, usually a meat dish, a vegetarian dish and a jacket potato option daily too.



Children have daily snack time with a substantial savoury snack and a drink of water and milk. **This is charged at £1 a week and payable on Parent Pay.** This also covers cooking ingredients for all the cooking we do.



Learning Journals



Online Learning Diaries are used to track and assess the children's work in a similar way to most preschools. We use a system called Tapestry for this.

All staff members working with your child will contribute to these to inform our assessments of where the children are currently in their learning, and how we can help them to deepen their understanding or develop their skill further.

Children will use some exercise books to support and record their learning through the year. This includes their daily RWI work.



Winter Uniform



Summer Uniform



P.E Uniform



Book Bags

Friends of
Carclaze
School

(Funding for 2020/21)



Carclaze School

- .
- .
- .
- .
- .
- .



What we need:

- bottle of water
- book bag
- packed lunch if not choosing to have the hot dinner option
- a bag with a change of clothes on the peg is helpful for accidents
- waterproof coat



Speech and Language

In September we will screen all children for any speech and language need. This helps to ensure all children receive the right support early on with their speech development and we can put support in place early. Simple speech immaturities are often addressed and corrected early on.



Additional Needs

We are proud of our inclusive culture in supporting **all** children's needs and development at our school.

If you have any concerns about your child's development please speak to the team or our school's Special Educational Needs Co-ordinator (Mrs Sandra Gynn).

Once we are aware of any need we can then put a thorough plan in place in order to support them fully.



Partnership with Parents/Carers

Communication

- Tapestry
- eSchool
- informal discussions
- website carclazesch.org
- newsletters
- topic information
- class letters
- home learning information
- workshops
- parent consultation evenings
- reports

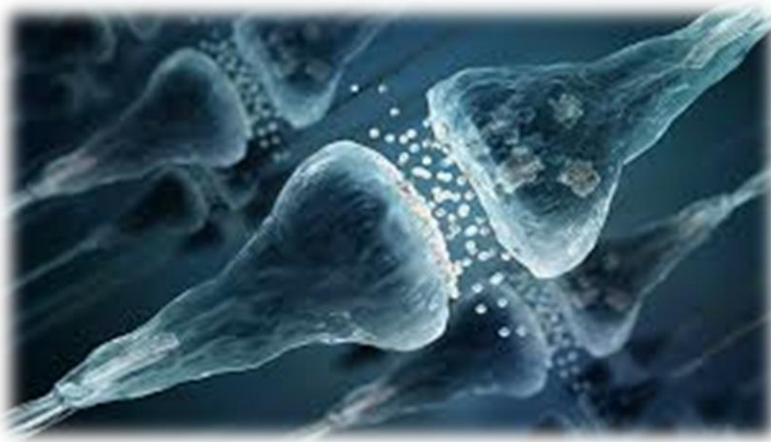


Attendance

Attendance is so important when children's brains are developing so rapidly.

90% of a child's brain develops by age 5.

If attendance drops to just 90% in their first year it is the same as missing 4 whole weeks of lessons/100 hours of learning.



Attendance Ladder



Key Transition Dates for this year

- Wednesday 30th April Parent Information Evening
- Wednesday 7th May Pre-school Setting Visits
- Thursday 8th May Pre-school Setting Visits
- Monday 12th May Pre-School Visits
- W/B 19th May Additional SEND preschool visits
- Thursday 5th June Stay and Play 3:30-4:15
- W/B 9th June New Class Lists Released > home visit information sent out
- Monday 9th June Stay and Play 3:30-4:15
- Monday 16th June Everyone Ready for School (invite only)
- Thursday 19th June Stay and Play 3:30-4:15
- Thursday 26th June Stay and Play 3:30-4:15
- Monday 30th June Stay and Play 3:30-4:15
- Monday 7th July Home Visits
- Tuesday 8th July Home Visits
- Wednesday 9th July Home Visits
- Wednesday 9th July Everyone Ready for School (invite only)
- Wednesday 16th Teddy Bear Picnic 3:20 with parents

Key Dates

New School Year

- Thursday 4th September 8:45-12:00
- Friday 5th September 8:45-12:00
- Monday 8th September 8:45-12:00
- Tuesday 9th September 8:45-12:00
- Wednesday 10th September 8:35-1:30pm (including lunch)
- Thursday 11th September 8:35-1:30pm (including lunch)
- Friday 12th September 8:35-3:05 (full day)



School Ready?

Nursery groups, organisations and charities concerned with education, have come together to define, for the first time, what they believe being ready to start Reception actually means. All the information and recommendations for parents, carers and families are available on the new Starting Reception website.

The 'Starting Reception' definition of school readiness is an agreed list of suggested skills and activities which parents should be practising with their children in preparation for starting school in Reception year.



Getting Ready for September

How can you help your child prepare?

- attend 'Stay and Play' sessions after school
- encourage your child to be independent including when toileting
- encourage your child to recognise their name and **have a go** at writing it
- label all school clothes, bags, bottles etc.
- explore the transition materials with your child
- remind your child about the exciting adventure that awaits them in September



In September

How can you help your child?

- support your child to read at home regularly to develop their use of phonics
- read to your child to help develop their vocabulary and understanding
- encouraging children to sound out when writing and not to copy
- support their development of number skills by counting forwards and backwards, spot numbers when you are out and about or even collect items to group or count
- talk to your child about their day and encourage them to reflect on their learning discoveries
- share their successes on Tapestry and celebrate their hard work





Welcome to our school
community!

Care, Communicate, Persevere and Sparkle